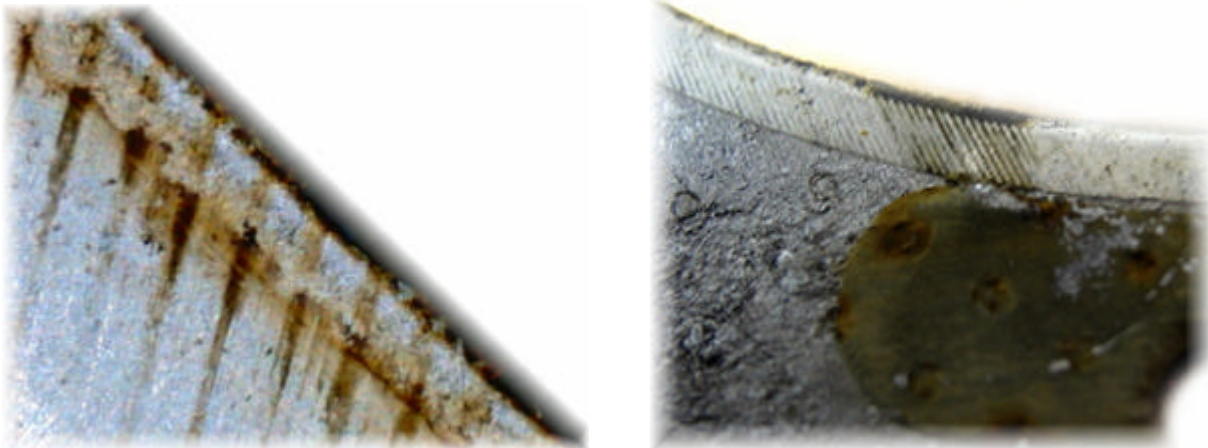


Failure Diagnosis – Combustion Tracking

Replacement of engine gaskets can be time wasted, if the cause of engine failure has not been identified. Gaskets act much like a safety valve or fuse, designed to give way, amid underlying fitting or operational problems, thus preventing more detrimental engine damage. As such, clues left on the gasket may help you diagnose failure, preventing any re-occurrence.

A poor surface finish to the cylinder block or head, may allow combustion and fluid leakage. The gasket may not conform to the large variations in machining marks in either of the mating surfaces. The pictures below shows combustion gases passing over the gaskets bore ferrules (fire rings).



Combustion gases tracking through peaks and valleys of machining marks, and passing into the cooling system.